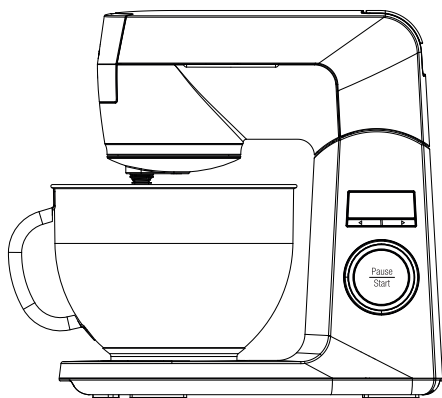


# Kitchen Machine

## User Manual



KMD3102W

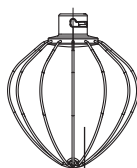
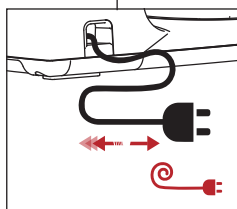
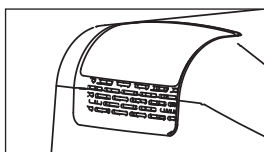
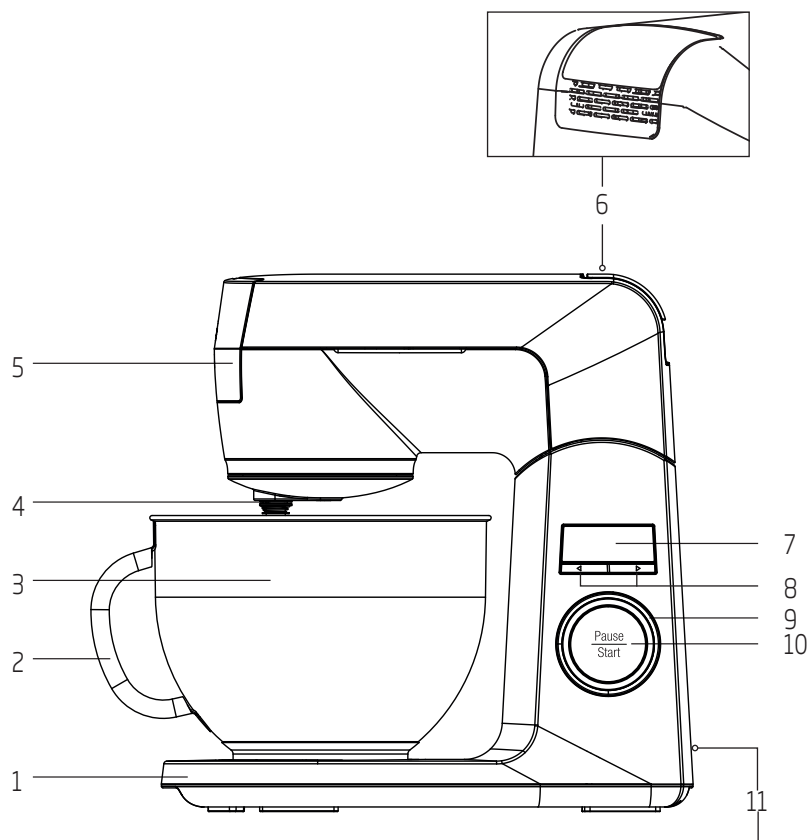
EN	DE	FR	TR
ES	PL	IT	RO

01M-8835553200-2819-03

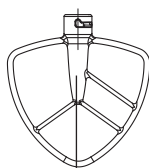
**beko**

# CONTENT

ENGLISH	6-10
DEUTSCH	11-16
FRANÇAIS	17-21
TÜRKÇE	22-25
ESPAÑOL	26-31
POLSKI	32-37
ITALIANO	38-43
ROMANIAN	44-51



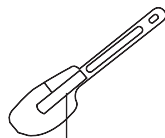
17



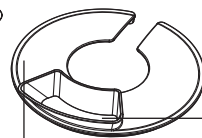
16



15

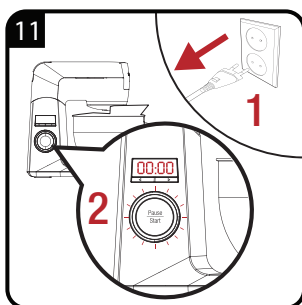
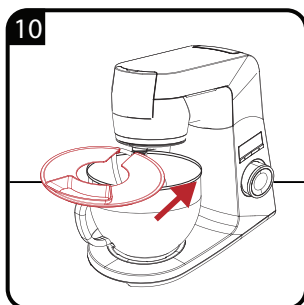
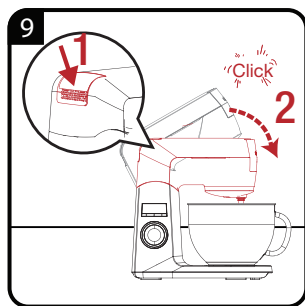
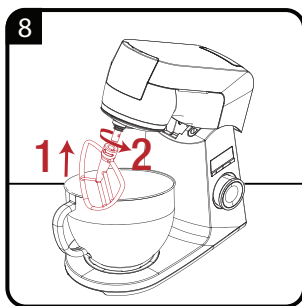
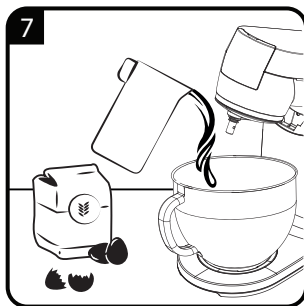
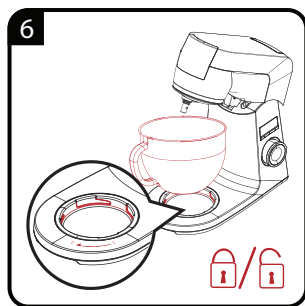
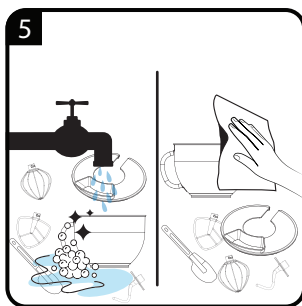
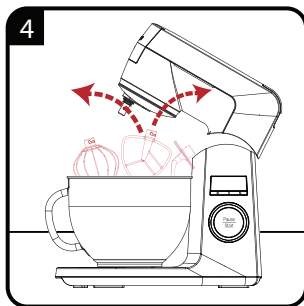
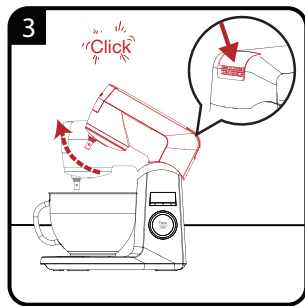
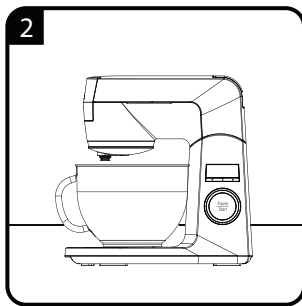
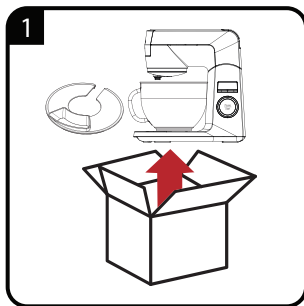


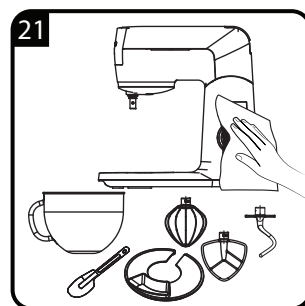
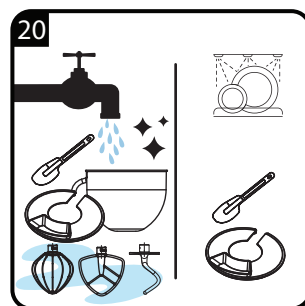
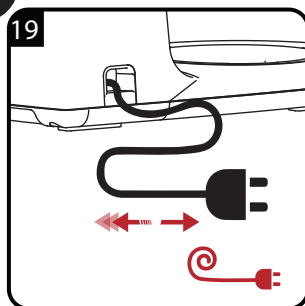
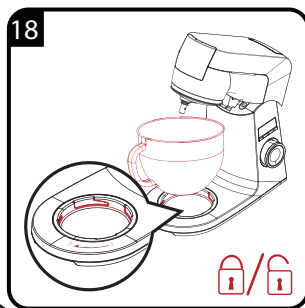
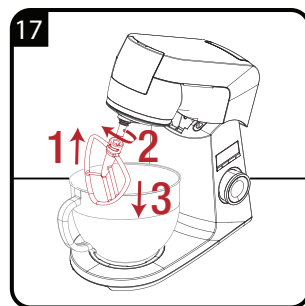
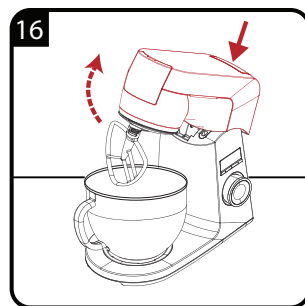
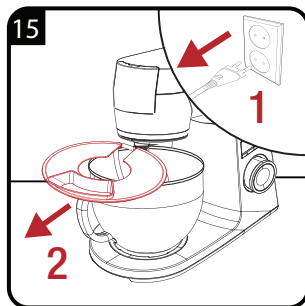
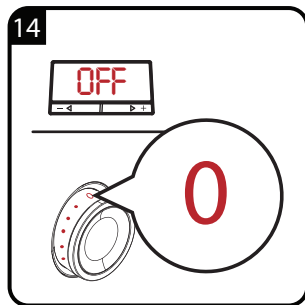
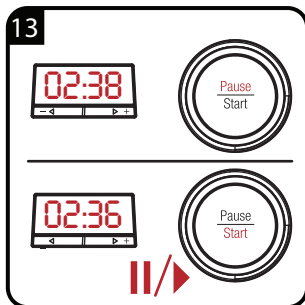
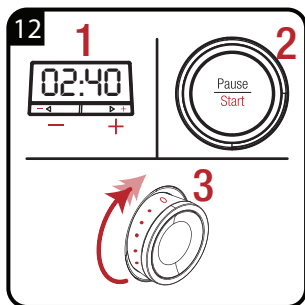
14



13

12










# Please read this user manual first!

Dear Valued Customer,

Thank you for preferring this Beko appliance. We hope that you get the best results from your appliance which has been manufactured with high quality and state-of-the-art technology. Therefore, please read this entire user manual and all other accompanying documents carefully before using the product and keep it as a reference for future use. If you handover the product to someone else, give the user manual as well. Follow the instructions by paying attention to all the information and warnings in the user manual. Remember that this user manual may also apply to other models. Differences between models are explicitly described in the manual.

## Meanings of the Symbols

Following symbols are used in various sections of this manual:

	Important information and useful hints about usage.
	<b>WARNING:</b> Warnings against dangerous situations concerning the security of life and property.
	Suitable for contact with food.
	Do not immerse the appliance, the power cable, or the power plug in water or any other liquid.
	Warning for electric shock.

## Accessories

1. Bowl housing
2. Bowl handle
3. Bowl
4. Accessory mounting point
5. Additional accessory inlet
6. Body opening button
7. LED display
8. Time setting buttons
9. Speed adjustment button
10. Pause/Start button
11. Cable hiding bay
12. Feeding chute
13. Protective cover
14. Spatula
15. Dough Hook
16. Beater
17. Balloon whisk

## Other accessories

You can get various other accessories to use with the appliance from dealers.

- Mince and sujuk accessories
- Dough spreading and noodle/vermicelli accessory
- Purée accessory

## Technical data

**Power supply:** 220-240V~ 50-60Hz

**Power:** 1000 W

Rights to make technical and design changes are reserved.

The values which are declared on the markings affixed to your product or in other printed documents supplied with it represent the values which have been obtained in the laboratories pursuant to the pertinent standards. These values may vary according to the usage of the appliance and ambient conditions.



This product has been manufactured in environmental friendly modern plants without giving any harm to the nature.

# 1 Important safety and environmental instructions

This section contains safety instructions that will help protect from risk of personal injury or material damage.

Failure to follow these instructions voids any granted warranty.

## 1.1 General safety

- This appliance complies with the international safety standards.
- This appliance may be used by people whose physical, perceptive or mental skills are impaired or who are inexperienced or not knowledgeable about the appliance as long as they are supervised or informed and made understood the safe use of the appliance and the encountered dangers.
- Children must not use the appliance.
- This appliance is intended for household use only. It has not been designed for professional use or for use in the areas below.
  - In shops, in personnel kitchens of offices or other working environments,
  - Farmhouses,
  - By customers in hotels, motels or other residential areas;
  - Places for sleep and breakfast.
- Children must be supervised at all times to make sure that they do not play with the appliance.
- Keep the appliance out of the reach of children.
- Cleaning and user maintenance cannot be performed by children.
- Clean the appliance in accordance with the instructions given in the "Cleaning" section.
- Do not use it if the power cable, accessories or the appliance itself is/are damaged. Contact an authorised service.
- Only use the original accessories, or accessories recommended by the manufacturer.
- Do not attempt to dismantle the appliance.
- Use the appliance in accordance with the amount and usage instructions given in "Maximum amount and processing times" section of the user manual.
- Always use the protective cover against the risk on injury when blending, kneading and whisking for safety reasons.



# 1 Important safety and environmental instructions

- Do not operate or place this appliance or its parts on or near hot surfaces.
- Do not use the appliance for hot food.
- Your mains power supply should comply with the information supplied on the rating plate of the appliance.
- Use the appliance with a grounded outlet.
- Do not use the appliance with an extension cable.
- Do not touch the plug of the appliance with damp or wet hands.
- Do not pull the power cable when unplugging the appliance.
- Unplug the appliance before cleaning, disassembly, accessory replacement and wait for it to stop completely.
- After cleaning, dry the appliance and all accessories before connecting it to mains supply and before attaching the accessories.
- Injuries may arise due to incorrect use if you touch the accessories of the product with bare hands when emptying the bowl, and cleaning and moving the product.
- Do not immerse the appliance, the power cable, or the power plug in water or any other liquid.
- If you keep the packaging materials, store them out of the reach of children.

## 1.2 Compliance with the WEEE Directive and Disposing of the Waste Product:

This product complies with EU WEEE Directive (2012/19/EU). This product bears a classification symbol for waste electrical and electronic equipment (WEEE).



This symbol indicates that this product shall not be disposed with other household wastes at the end of its service life. Used device must be returned to official collection point for recycling of electrical and electronic devices. To find these collection systems please contact to your local authorities or retailer where the product was purchased. Each household performs important role in recovering and recycling of old appliance. Appropriate disposal of used appliance helps prevent potential negative consequences for the environment and human health.

## 1.3 Compliance with RoHS Directive

The product you have purchased complies with EU RoHS Directive (2011/65/EU). It does not contain harmful and prohibited materials specified in the Directive.

# 1 Important safety and environmental instructions

## 1.4 Package information



Packaging materials of the product are manufactured from recyclable materials in accordance with our National Environment Regulations. Do not dispose of the packaging materials together with the domestic or other wastes. Take them to the packaging material collection points designated by the local authorities.